



MANCHESTER
CITY COUNCIL

Results from the Alcohol Public Space Protection Order Consultation

June 2021

Dawn Billups and Nicola Lodge

Contents

- Background to the consultation
- Responses compared by geographic location including citywide and North, Central and South Manchester
- Analysis of respondents highlighting areas in:
 - North Manchester
 - Central Manchester
 - South Manchester
- Demographic analysis of all respondents

Background

- A consultation took place with the public on whether or not the police and Council should introduce Public Spaces Protection Orders (PSPO) in areas of Manchester to control street drinking in public spaces.
- A PSPO would specify behaviour which is unacceptable and give the police and Council an extra tool to help tackle unacceptable behaviour, alongside existing powers and ongoing partnership work.
- The consultation took place between 9th March and 31st May 2021.
- During that period 334 people responded to the consultation via the online form which was hosted on Manchester City Council's website. Of these responses, people highlighted the following areas in Manchester :
 - 130 (39%) were in North Manchester
 - 99 (30%) were in South Manchester
 - 23 (7%) were in Central Manchester
 - 58 (17%) stated areas in the city centre which is excluded from this consultation as there is currently a PSPO within this area
 - 15 (4%) stated the whole of Manchester
 - 7 (2%) were areas what were unidentifiable and
 - 2 (1%) were outside of Manchester.

Please note that analysis of responses from this point will exclude 58 responses that were in the city centre and 2 that were outside of Manchester. The base will therefore be 274.

All responses compared by geography

Respondents were asked which best describes them:

	Resident in the area	You work in the area	Visitor tourist shopper busines	Local business owner or manager	Other	Representative from the VCS	You study in Manchester	Grand Total
North	96 74%	21 16%	7 5%	5 4%	1 1%			130
Central	13 57%	7 30%	2 9%	1 4%	0%			23
South	75 76%	17 17%		3 3%	3 3%	1 1%		99
Ambiguous location	5 71%	2 29%						7
All Manchester	10 67%	2 13%	1 7%	1 7%			1 7%	15
Grand Total	199 73%	49 18%	10 4%	10 4%	4 1%	1 0%	1 0%	274

Other includes two local councillors, chairperson of a park and a visitor to the Halle

How often does the respondent visit the area?

	Almost everyday	At least once a week	About once a month	Within the last six months	Within the last year	Grand Total
North	105 81%	22 17%	2 2%	1 1%		130
Central	19 83%	2 9%	1 4%	1 4%		23
South	88 89%	9 9%	2 2%			99
Ambiguous location	5 71%	2 29%				7
All Manchester	11 73%	3 20%			1 7%	15
Grand Total	228 83%	38 14%	5 2%	2 1%	1 0%	274

Please note: All Manchester is where respondents have said the whole city and not North, Central and South summed.

All responses compared by geography

Have respondents observed street drinking in the area in the past two years?

	Yes		No		Grand Total
North	124	95%	6	5%	130
Central	16	70%	7	30%	23
South	93	94%	6	6%	99
Ambiguous location	7	100%		0%	7
All Manchester	11	73%	4	27%	15
Grand Total	251	92%	23	8%	274

How often did street drinking take place?

	Daily		Several times a week		Once a week		Once a month		Several times a month		Other		Grand Total
North	57	44%	41	32%	13	10%	2	2%	10	8%	7	5%	130
Central	6	26%	9	39%					1	4%	7	30%	23
South	46	46%	24	24%	4	4%	3	3%	12	12%	10	10%	99
Ambiguous location	4	57%	1	14%	1	14%					1	14%	7
All Manchester	3	20%	1	7%	1	7%			4	27%	6	40%	15
Grand Total	116	42%	76	28%	19	7%	5	2%	27	10%	31	11%	274

Majority of 'other' respondents stated never. Others also include on rare occasions, when I am there, only near a pub, once every 3 months, regularly when students are in residence.

Please note: All Manchester is where respondents have said the whole city and not North, Central and South summed.

All responses compared by geography

What was the respondents' view of street drinking in the area?

	A major problem			A minor problem			Not a problem			Don't know			Grand Total
North	<div></div>	83	64%	<div></div>	32	25%	<div></div>	12	9%	<div></div>	3	2%	130
Central	<div></div>	11	48%	<div></div>	4	17%	<div></div>	8	35%	<div></div>	0	0%	23
South	<div></div>	58	59%	<div></div>	20	20%	<div></div>	21	21%	<div></div>	0	0%	99
Ambiguous Location	<div></div>	3	43%	<div></div>	1	14%	<div></div>	3	43%	<div></div>	0	0%	7
All Manchester	<div></div>	1	7%	<div></div>	2	13%	<div></div>	12	80%	<div></div>	0	0%	15
Grand Total	<div></div>	156	57%	<div></div>	59	22%	<div></div>	56	20%	<div></div>	3	1%	274

Did the respondents still think there was problems with street drinking in the area they identified?

	Yes		No		Grand Total
North	<div><div></div></div> 11387%	<div><div></div></div> 1713%	130		
Central	<div><div></div></div> 1357%	<div><div></div></div> 1043%	23		
South	<div><div></div></div> 7475%	<div><div></div></div> 2525%	99		
Ambiguous Location	<div><div></div></div> 343%	<div><div></div></div> 457%	7		
All Manchester	<div><div></div></div> 213%	<div><div></div></div> 1387%	15		
Grand Total	<div><div></div></div> 20575%	<div><div></div></div> 6925%	274		

Please note: All Manchester is where respondents have said the whole city and not North, Central and South summed.

All responses compared by geography

What is the nature of the problem?

	Litter		Groups Congregating		Urination		Noise		Bad language		Intimidation		Other		Harrasment		Grand Total
North	110	85%	98	75%	99	76%	99	76%	68	52%	54	42%	26	20%	38	29%	130
Central	10	43%	11	48%	9	39%	7	30%	6	26%	9	39%	14	61%	6	26%	23
South	70	71%	63	64%	56	57%	51	52%	44	44%	41	41%	36	36%	27	27%	99
Ambiguous location	4	57%	3	43%	4	57%	3	43%	2	29%	2	29%	3	43%	2	29%	7
All Manchester	4	27%	3	20%	2	13%	3	20%	3	20%	1	7%	11	73%	1	7%	15
Grand Total	198	72%	178	65%	170	62%	163	59%	123	45%	107	39%	90	33%	74	27%	274

What time of day/night did street drinking take place?

	Morning		Afternoon		Evening		Night		Total
North	29	22%	86	66%	117	90%	90	69%	130
Central	9	39%	13	57%	15	65%	9	39%	23
South	43	43%	63	64%	73	74%	57	58%	99
Ambiguous location	1	14%	4	57%	6	86%	4	57%	7
All Manchester	7	47%	10	67%	12	80%	10	67%	15
Grand Total	89	32%	176	64%	223	81%	170	62%	274

Please note: All Manchester is where respondents have said the whole city and not North, Central and South summed.

All responses compared by geography

Respondents were asked how the behaviour affected them, They responded:

	The area looked untidy	I felt unsafe in the area	I felt afraid or intimidated	It resulted in disturbed or lack of	I avoided the area	It did not affect me	Other	Total
North	106 82%	70 54%	51 39%	47 36%	36 28%	17 13%	16 12%	130
Central	12 52%	8 35%	5 22%	3 13%	6 26%	8 35%	3 13%	23
South	63 64%	46 46%	31 31%	30 30%	29 29%	23 23%	14 14%	99
Ambiguous Location	4 57%	1 14%	1 14%	0%	0%	3 43%	1 14%	7
All Manchester	1 7%	1 7%	0%	0%	1 7%	9 60%	6 40%	15
Grand Total	186 68%	126 46%	88 32%	80 29%	72 26%	60 22%	40 15%	274

Respondents were asked if the area they had identified should have a PSPO to control public drinking, they responded:

	Yes	No	Don't know	Grand Total
North	108 83%	17 13%	5 4%	130
Central	16 70%	5 22%	2 9%	23
South	72 73%	17 17%	10 10%	99
Ambiguous location	3 43%	3 43%	1 14%	7
All Manchester	1 7%	13 87%	1 7%	15
Grand Total	200 73%	55 20%	19 7%	274

Please note: All Manchester is where respondents have said the whole city and not North, Central and South summed.

North Manchester

Areas in North Manchester highlighted by respondents and the issues with those areas

130 respondents highlighted areas in North Manchester. Of these:

96 (74%) Residents in the area	21 (16%) Work in the area	7 (5%) Visitor (tourist/shopper/business)	5 (4%) Local business owner	1 (1%) Other
---	--	--	--	---------------------------

Asked how often they visited the area, respondents said the following:

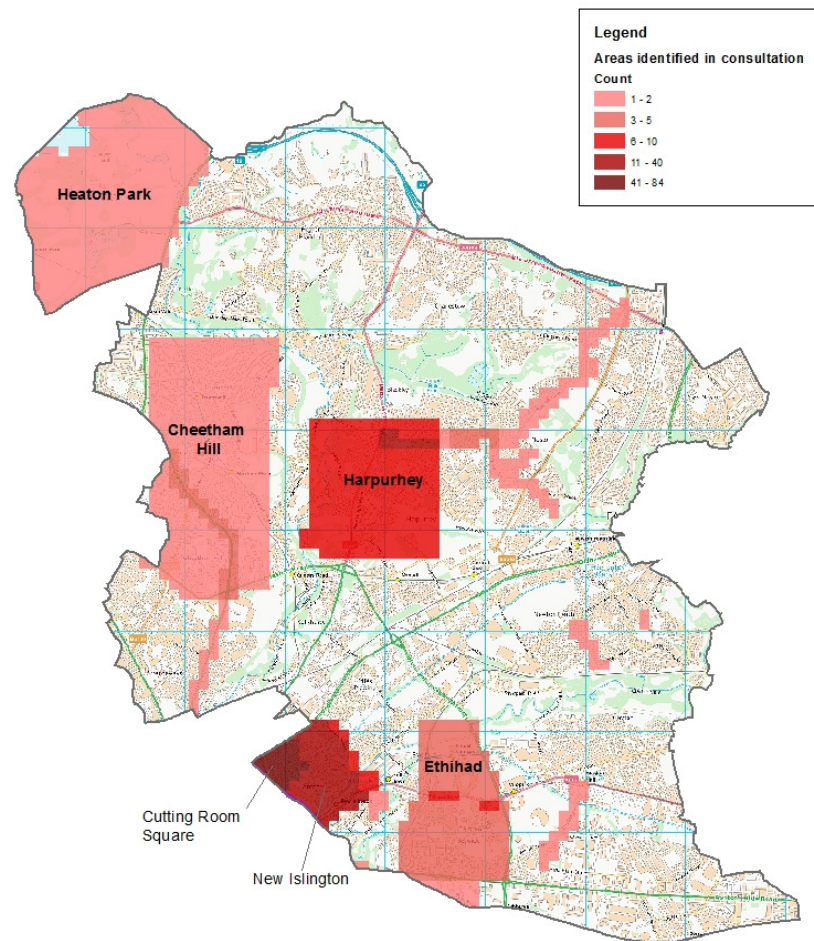
105 (81%) Almost everyday	22 (17%) At least once a week	2 (2%) About once a month	1 (1%) Within the last 6 months
--	--	--	--

Asked if the respondent agreed or disagreed that the area they identified should be included in a PSPO to control public drinking, they responded:

108 (83%) Yes	17 (13%) No	5 (4%) Don't know
----------------------------	--------------------------	--------------------------------

North Manchester

Areas in North Manchester highlighted by respondents and the issues with those areas



Has street drinking been observed in the area in the last two years:

124 (95%) Yes, street drinking had been observed
6 (5%) No, street drinking hadn't been observed

How often has street drinking taken place?

57 (44%) Daily
41 (32%) Several times a week
13 (10%) Once a week
10 (8%) Several times a month
7 (5%) Other
2 (2%) Once a month

What is your view of street drinking in this area?

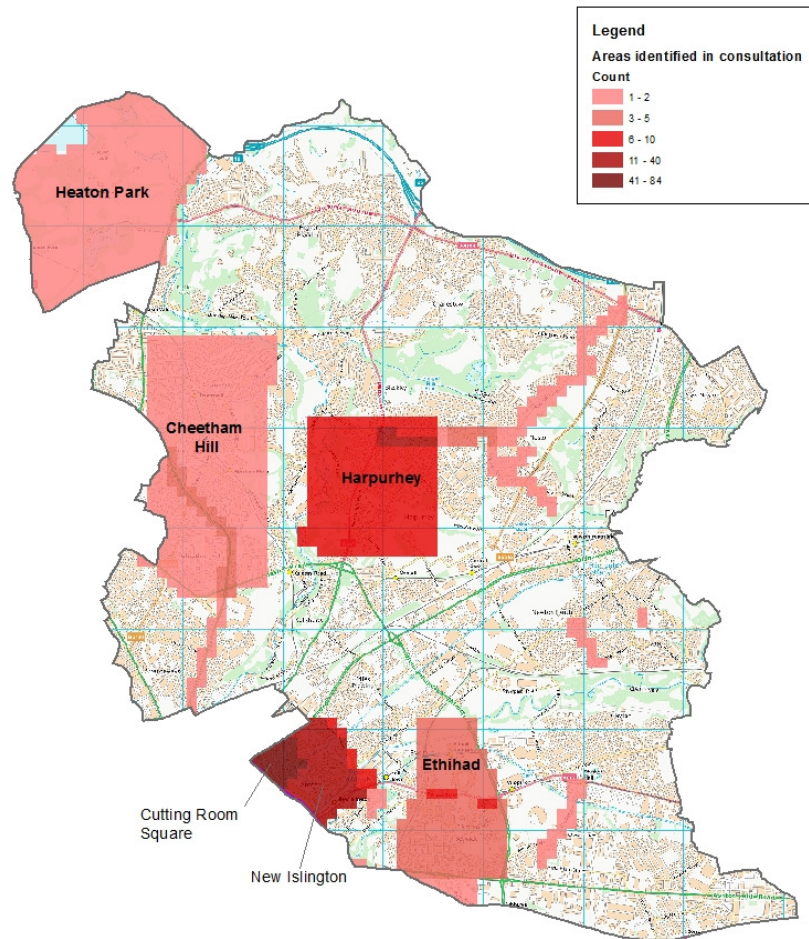
83 (64%) A major problem
32 (25%) A minor problem
12 (9%) Not a problem
3 (2%) Don't know

Are there still problems with street drinking in the area?

113 (87%) Yes
17 (13%) No

North Manchester

Areas in North Manchester highlighted by respondents and the issues with those areas



In addition to street drinking, have you experienced any other associated problems:

110	(85%) Litter
99	(76%) Noise
99	(76%) Urination
98	(75%) Groups congregating
68	(52%) Bad language
54	(42%) Intimidation
38	(29%) Harassment
26	(20%) Other

The times of day when the problem took place was:

117	(90%) Evening
90	(29%) Night
86	(66%) Afternoon
29	(22%) Morning

This affect the respondents in the following way:

106	(82%) The area looked untidy
70	(54%) I felt unsafe in the area
51	(39%) I felt afraid or intimidated
47	(36%) It resulted in disturbed or lack of sleep
36	(28%) I avoided the area
17	(13%) It did not affect me
16	(12%) Other

Slide 11

LC1

[@Dawn Billups] - Should the denominator be 130 - is it multiple choice? so the percentages wouldn't add up to 100 but out of 130 85% said litter was a problem 76% noise etc?

Lorraine Copeland, 30/06/21

LC2

ie should it be worded of the 130 respondents

Lorraine Copeland, 30/06/21

Central Manchester

Areas in Central Manchester highlighted by respondents and the issues with those areas

23 respondents highlighted areas in Central Manchester. Of these:

13

(57%)

Residents in the area

7

(30%)

Work in the area

2

(9%)

Visitor (tourist/shopper/business)

1

(4%)

Local business owner

Asked how often they visited the area, respondents said the following:

19

(83%)

Almost everyday

2

(9%)

At least once a week

1

(4%)

About once a month

1

(4%)

Within the last 6 months

Asked if the respondent agreed or disagreed that the area they identified should be included in a PSPO to control public drinking, they responded:

16

(70%)

Yes

5

(22%)

No

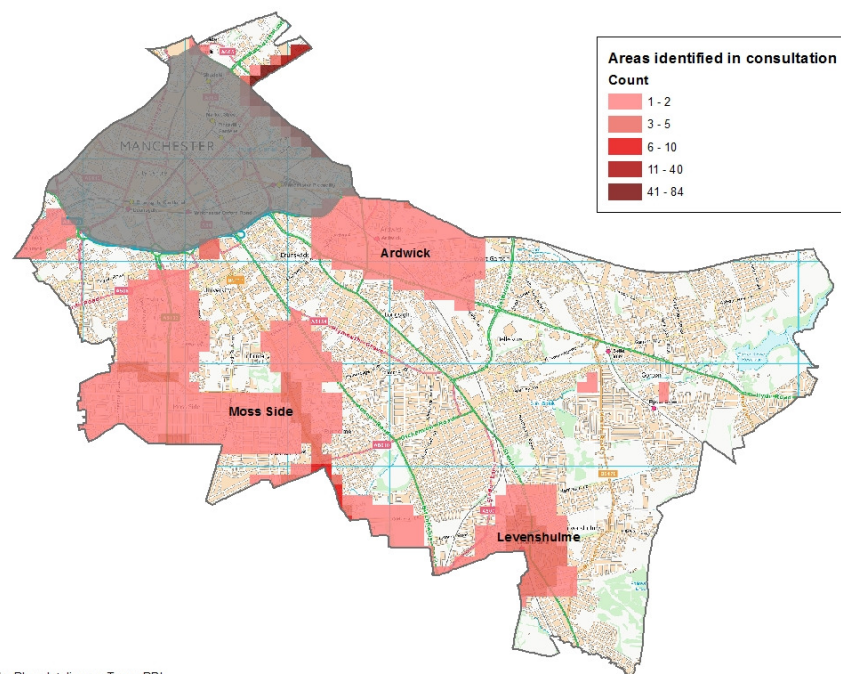
2

(9%)

Don't know

Central Manchester

Areas in Central Manchester highlighted by respondents and the issues with those areas



Produced by Place Intelligence Team, PRI

Has street drinking been observed in the area in the last two years:

- 16 (70%) Yes, street drinking had been observed
- 7 (30%) No, street drinking hadn't been observed

How often has street drinking taken place?

- 9 (39%) Several times a week
- 7 (30%) Other
- 6 (26%) Daily
- 1 (4%) Several times a month

What is your view of street drinking in this area?

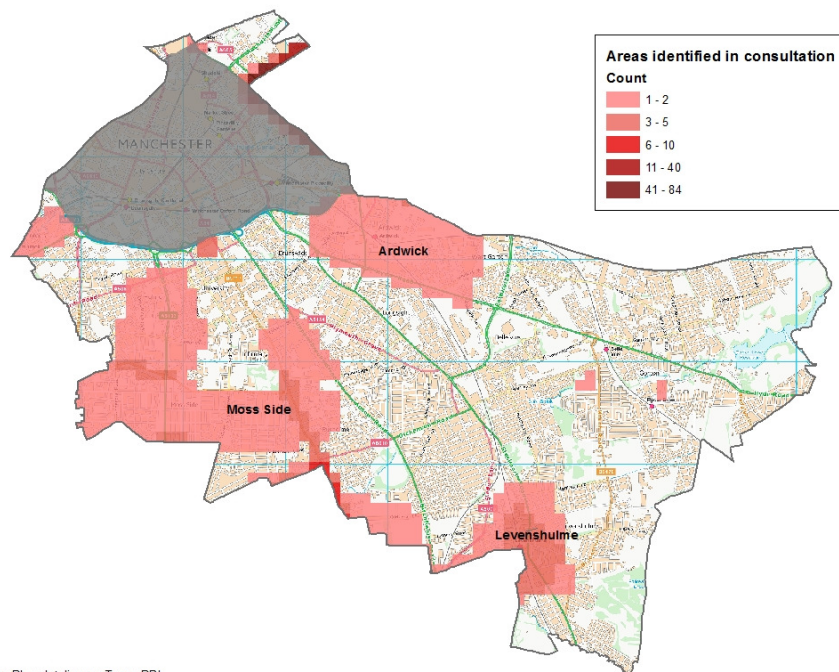
- 11 (48%) A major problem
- 8 (35%) Not a problem
- 4 (17%) A minor problem

Are there still problems with street drinking in the area?

- 13 (57%) Yes
- 10 (43%) No

Central Manchester

Areas in Central Manchester highlighted by respondents and the issues with those areas



Produced by Place Intelligence Team, PRI

In addition to street drinking, have you experienced any other associated problems:

14	(61%)	Other
11	(48%)	Groups congregating
10	(43%)	Litter
9	(39%)	Intimidation
9	(39%)	Urination
7	(30%)	Noise
6	(26%)	Bad language
6	(26%)	Harassment

ie times of day when the problem took place was:

15	(65%)	Evening
13	(57%)	Afternoon
9	(39%)	Morning
9	(39%)	Night

is affect the respondents in the following way:

12	(52%)	The area looked untidy
8	(35%)	I felt unsafe in the area
8	(35%)	It did not affect me
6	(26%)	I avoided the area
5	(22%)	I felt afraid or intimidated
3	(13%)	It resulted in disturbed or lack of sleep
3	(13%)	Other

South Manchester

Areas in South Manchester highlighted by respondents and the issues with those areas

99 respondents highlighted areas in North Manchester. Of these:

75 (76%) Residents in the area	17 (17%) Work in the area	4 (4%) Other	3 (3%) Local business owner	0 (5%) Visitor (tourist/shopper/business)
---	--	---------------------------	--	--

Asked how often they visited the area, respondents said the following:

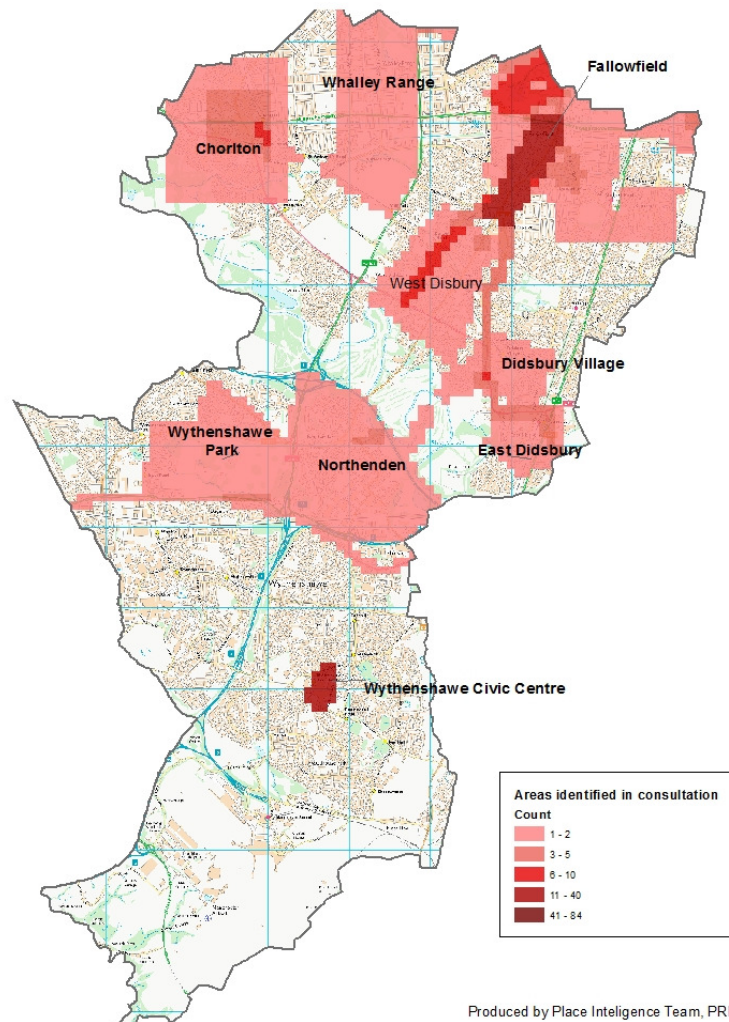
88 (89%) Almost everyday	9 (9%) At least once a week	2 (2%) About once a month	0 (0%) Within the last 6 months
---------------------------------------	--	--	--

Asked if the respondent agreed or disagreed that the area they identified should be included in a PSPO to control public drinking, they responded:

72 (73%) Yes	17 (17%) No	10 (10%) Don't know
---------------------------	--------------------------	----------------------------------

South Manchester

Areas in South Manchester highlighted by respondents and the issues with those areas



Has street drinking been observed in the area in the last two years:

93	(94%) Yes, street drinking had been observed
6	(6%) No, street drinking hadn't been observed

How often has street drinking taken place?

46	(46%) Daily
24	(24%) Several times a week
12	(12%) Several times a month
10	(10%) Other
4	(4%) Once a week
3	(3%) Once a month

What is your view of street drinking in this area?

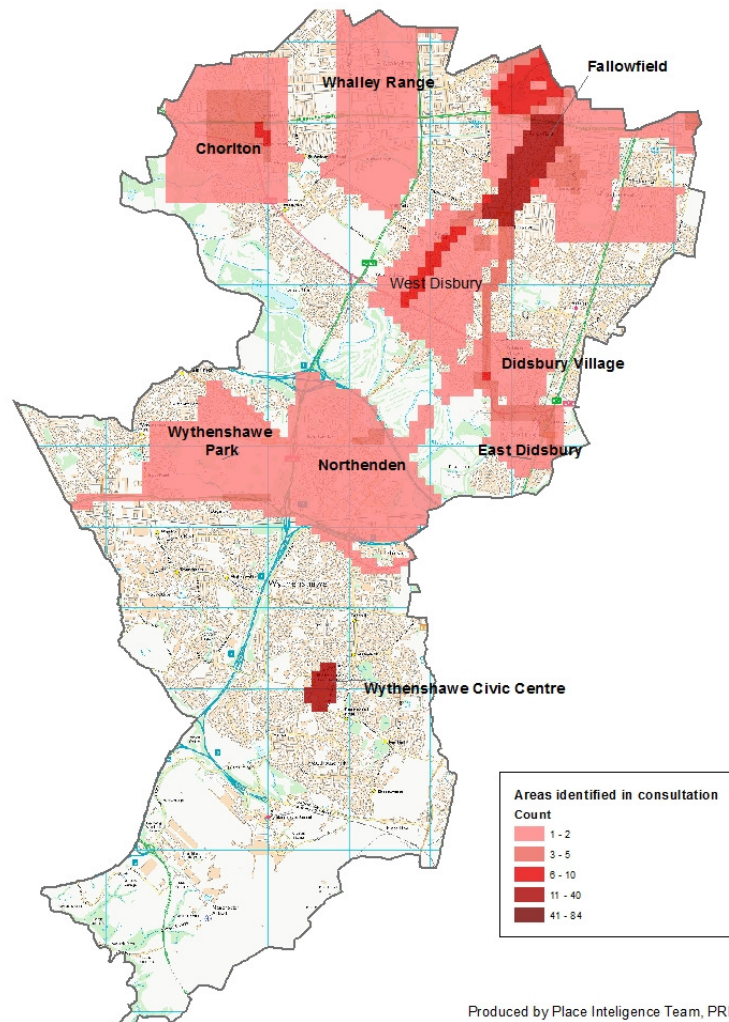
58	(59%) A major problem
21	(21%) Not a problem
20	(20%) A minor problem

Are there still problems with street drinking in the area?

74	(75%) Yes
25	(25%) No

South Manchester

Areas in South Manchester highlighted by respondents and the issues with those areas



In addition to street drinking, have you experienced any other associated problems:

70	(71%) Litter
63	(63%) Groups congregating
56	(57%) Urination
51	(52%) Noise
44	(44%) Bad language
41	(41%) Intimidation
36	(36%) Other
27	(27%) Harassment

The times of day when the problem took place was:

73	(74%) Evening
63	(64%) Afternoon
57	(58%) Night
43	(43%) Morning

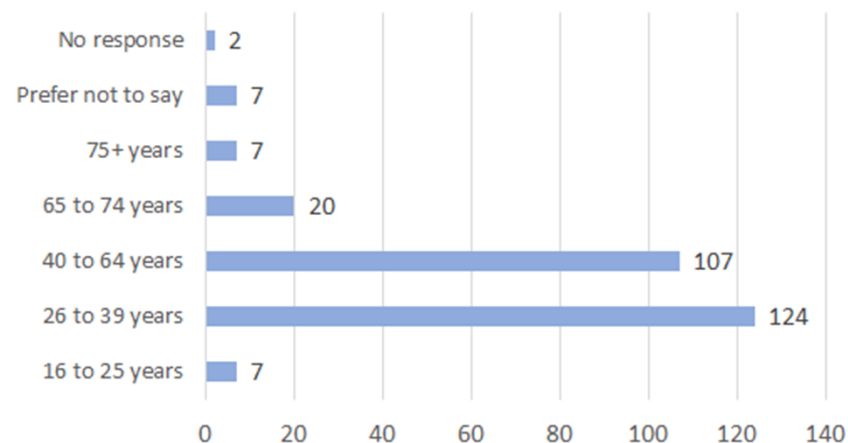
This affect the respondents in the following way:

63	(64%) The area looked untidy
46	(46%) I felt unsafe in the area
31	(31%) I felt afraid or intimidated
30	(30%) It resulted in disturbed or lack of sleep
29	(29%) I avoided the area
23	(23%) It did not affect me
14	(14%) Other

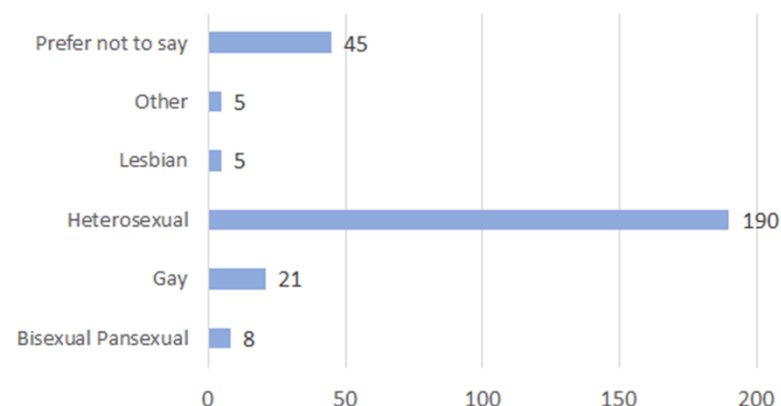
Demographics of all respondents

Based on 274 respondents

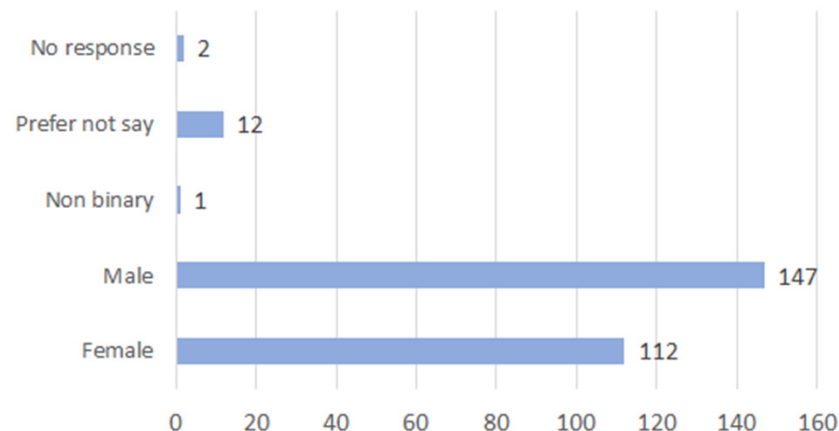
Age of respondents



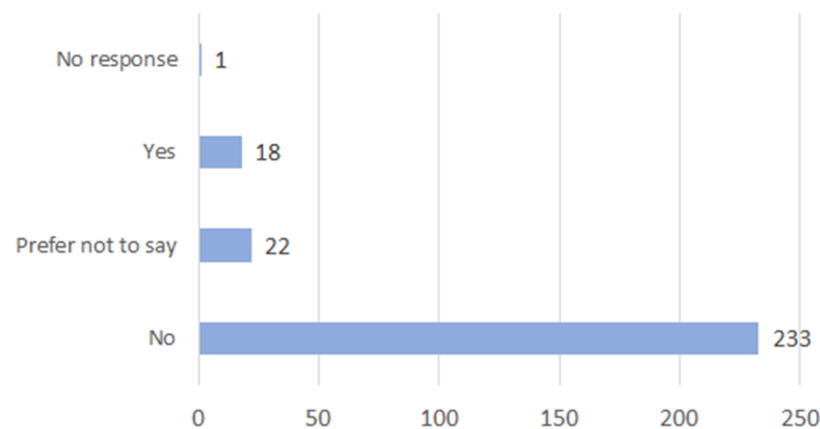
Sexual orientation of respondents



Gender of respondents



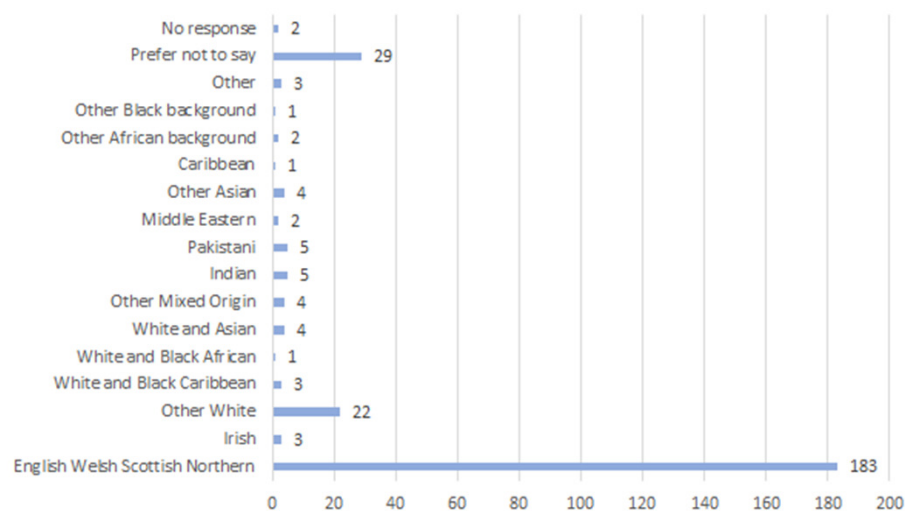
Do respondents have a disability?



Demographics of all respondents

Based on 274 respondents

Ethnicity of respondents



Respondents religious beliefs

